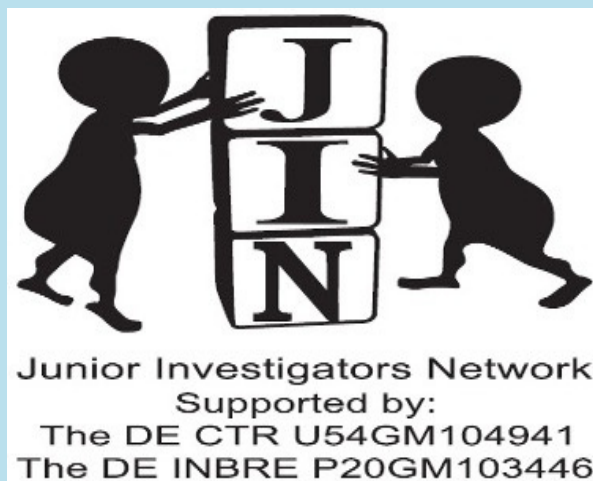


# The JIN



WHAT IS IT &  
HOW CAN IT HELP YOU?



## WHAT IS THE JIN?

The JIN is a network of research faculty with interests in basic as well as clinical and translational research. The JIN supports networking and faculty engagement, and it co-sponsors interactive educational and professional development sessions to address challenges facing new investigators, the development of collaborative research, and mentor training.

## STAY UP TO DATE

Subscribe to our (sometimes) weekly *JIN & Topics* newsletter filled with funding information, educational opportunities, and more. You can also follow us on X (formerly Twitter) at @JrInvestigators.



## RESOURCES FOR SUBMITTING GRANTS

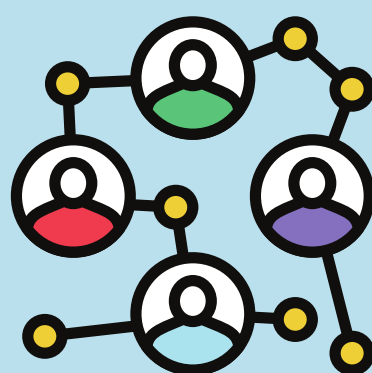
Set up a Mentoring and Advisory Council (MAC) session to have a group of senior scientists/mentors review your grant application prior to submission to provide feedback, advice, tips, etc. Email [Mentoring@de-ctr.org](mailto:Mentoring@de-ctr.org) to schedule.

## CONNECT WITH US WEEKLY

Experiencing challenges with your research? Want to learn more ways to collaborate? Interested in hearing what others are working on?

Join us every Thursday at 9am for a quick call!

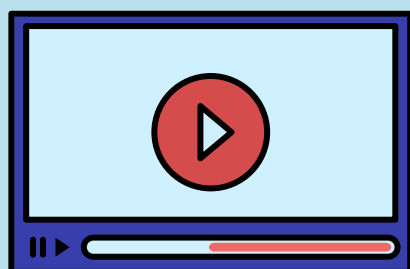
Dial: 469-253-5858  
Conference ID: 238 561 317#  
*To join via Teams, click [here](#).*



## CHECK US OUT ON YOUTUBE

Our YouTube channel hosts a variety of educational grant writing videos, presentations from our very own JIN members, as well as information about locally available resources.

[youtube.com/@JrInvestigators](https://youtube.com/@JrInvestigators)



## GOT QUESTIONS OR NEWS TO SHARE?

To join the JIN or share some good news, please email [Mentoring@de-ctr.org](mailto:Mentoring@de-ctr.org).

